



The Project

THE KNEE is an exceptional 7-story commercial building on a prominent corner lot at the Spree in Berlin Charlottenburg. The building is a “Green Building” and has been awarded with the LEED Gold Certification for Sustainability. It is an angular structure with a slightly recessed ground floor for small-scale retail usage, as well as recessed staggered top floor.

Main access to the office spaces is from Gutenbergstraße via a spacious foyer, which connects the street and the landscaped courtyard. A central staircase and two elevators provide vertical access and connect all upper floors and the underground parking garage.



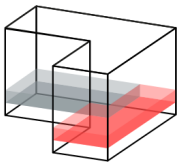
1st floor right

- LEED Gold certified
- Ready for usage by the 4th quarter of 2019
- Smoked oak parquet
- High quality lighting systems
- Tea kitchen optional
- Openable windows
- Partial air conditioning
- Concrete core activation
- Electricity and data wiring through floor tanks
- Glass fiber interfacing
- Ceiling height 3,00m
- Showers available
- Underground parking spaces with electrical charging available
- Storerooms available
- Auxilliary costs 3,50 € per square meter

Size 382,26sqm

Rent 25,00 €

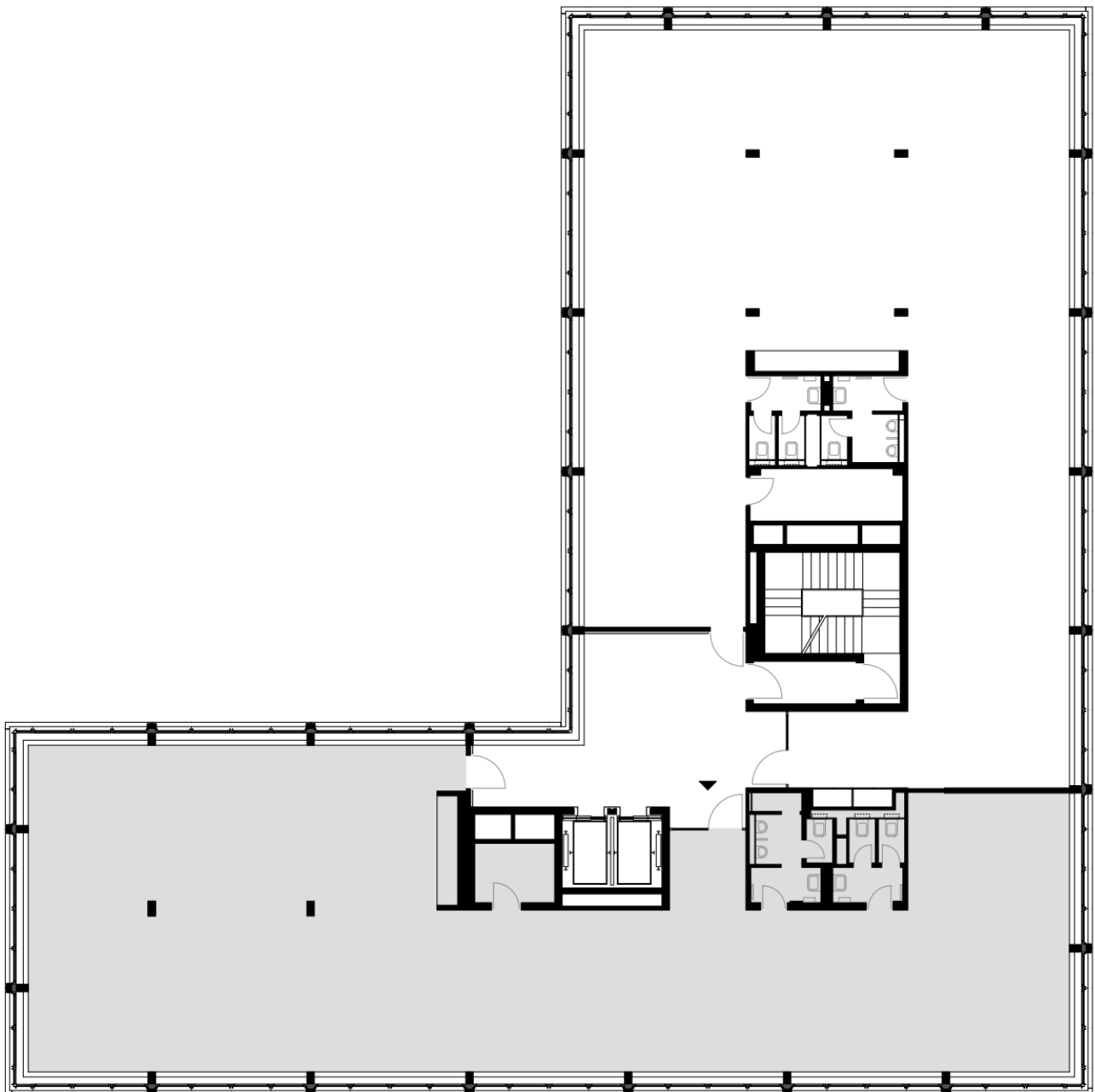
Pictures



Localization



Floor plan
/ 1st floor right





Location

THE KNEE is located in a superb downtown location with excellent connections to public transport, as well as Berlin's Central Station and Tegel Airport (TXL). The neighborhood is characterized by the academic buildings of Berlin's Technical University, the headquarters of Mercedes Benz, and the brick heritage ensemble of Königliche Porzellan Manufaktur.

Gutenbergstraße 2
10587 Berlin
Germany

Fritjof Nagel
+49 160 979 488 40
vermietung@anh-hausbesitz.de

